

PRAISE THE LORD

3 Holy, Holy, Holy! Lord God Almighty

Holy, holy, holy is the Lord God Almighty, who was, and is, and is to come. Revelation 4:8

D Bm A A⁷ D DM⁷ G G^{#4} G E_m_G D

1. Ho - ly, ho - ly, ho - ly! Lord God Al - might - y!
 2. Ho - ly, ho - ly, ho - ly! all the saints a - dore Thee,
 3. Ho - ly, ho - ly, ho - ly! tho' the dark - ness hide Thee,
 4. Ho - ly, ho - ly, ho - ly! Lord God Al - might - y!

A_{C#} D A_{C#} Bm E₇_B A_{C#} D A_E E₇ A A⁷

5 Ear - ly in the morn - ing our song shall rise to Thee.
 6 Cast - ing down their gold - en crowns a - round the glass - y sea.
 7 Tho' the eye of sin - ful man Thy glo - ry may not see.
 8 All Thy works shall praise Thy name in earth, and sky, and sea.

D Bm A A⁷ D DM⁷ G G^{#4} G E_m_G D

9 Ho - ly, ho - ly, ho - ly! mer - ci - ful and might - y!
 10 Cher - u - bim and ser - a - phim fall - ing down be - fore Thee,
 11 On - ly Thou art ho - ly - there is none be - side Thee,
 12 Ho - ly, ho - ly, ho - ly! mer - ci - ful and might - y!

Bm G_B D_{F#} D_{F#}⁷ G D D⁷ G G⁶ A⁷ D

13 God in three Per - sons, bless - ed Trin - i - ty!
 14 Which wert, and art, and ev - er - more shalt be.
 15 Per - fect in pow'r, in love, in pu - ri - ty.
 16 God in three Per - sons, bless - ed Trin - i - ty!

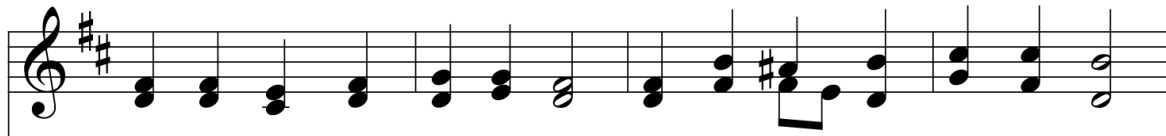
TEXT: Reginald Heber
 MUSIC: John B. Dykes; Last stanza setting
 and Choral ending by Camp Kirkland

NICAEA
 11.12.12.10.

Christ, Whose Glory Fills the Skies 662



1 Christ, whose glo - ry fills the skies; Christ, the true, the on - ly light;
 2 Dark and cheer-less is the morn un - ac - com - panied by thee;
 3 Vis - it then this soul of mine; pierce the gloom of sin and grief;



Sun of Righ-teous-ness, a - rise; tri-umph o'er the shades of night;
 joy - less is the day's re - turn till thy mer - cy's beams I see;
 fill me, ra - dian - cy di - vine; scat - ter all my un - be - lief;



Day - spring from on high, be near; Day - star, in my heart ap - pear.
 till they in - ward light im - part, cheer my eyes and warm my heart.
 more and more thy - self dis - play, shin - ing to the per - fect day.



This well-crafted morning hymn opens by celebrating daylight as an image of Christ, the true Light, then ponders life without light, and culminates in a prayer for inward light. The tune's name honors its German roots: Ratisbon is the former English name for Regensburg.

TEXT: Charles Wesley, 1740

MUSIC: German folk melody; adapt. Johann Werner, 1815; harm. William Henry Havergal, 1847

RATISBON

7.7.7.7.7.7

139 Great Is Thy Faithfulness

The Lord's compassions are new every morning; great is Your faithfulness. Lamentations 3:22-23

1. Great is Thy faith - ful - ness, O God, my Fa - ther;
 2. Sum - mer and win - ter, and spring - time and har - vest,
 3. Par - don for sin and a peace that en - dur - eth,

There is no shad - ow of turn - ing with Thee.
 Sun, moon and stars in their cours - es a - bove,
 Thy own dear pres - ence to cheer and to guide.

Thou chang - est not; Thy com - pas - sions, they fail not.
 Join with all na - ture in man - i - fold wit - ness
 Strength for to - day and bright hope for to - mor - row -

As Thou hast been Thou for - ev - er wilt be.
 To Thy great faith - ful - ness, mer - cy and love.
 Bless - ings all mine with ten thou - sand be - side!

13 *Refrain*
 Great is Thy faith - ful - ness! Great is Thy faith - ful - ness! Morn - ing by

TEXT: Thomas O. Chisholm
 MUSIC: William M. Runyan

FAITHFULNESS
 11.10.11.10. with Refrain

WORSHIP THE LORD

The image shows a musical score for the hymn "Worship the Lord". It consists of two systems of music, each with a vocal line and a guitar accompaniment line. The key signature is D major (two sharps) and the time signature is 4/4. The lyrics are: "morn - ing new mer - cies I see; All I have need - ed Thy hand hath pro - vid - ed. Great is Thy faith - ful - ness, Lord, un - to me!". The guitar accompaniment includes various chords such as D, Dm6, A/E, E7, A, A7, A9, D, Em6, D, Em, F#, GM7, G6, G#o7, C#, G#o7, D/A, A7, and D. Measure numbers 22 through 32 are indicated at the bottom of the score.

Chords for the first system: D, Dm6, A/E, D/E, E7, A, A7, A9, A7, D, Em6/D.

Chords for the second system: D, Em, D/F#, GM7, G6, G#o7, C#, G#o7, D/A, A7, D.

Lyrics: morn - ing new mer - cies I see; All I have need - ed Thy hand hath pro - vid - ed. Great is Thy faith - ful - ness, Lord, un - to me!

Measure numbers: 22, 23, 24, 25, 26, 27, 28, 29, 30, 31, 32.